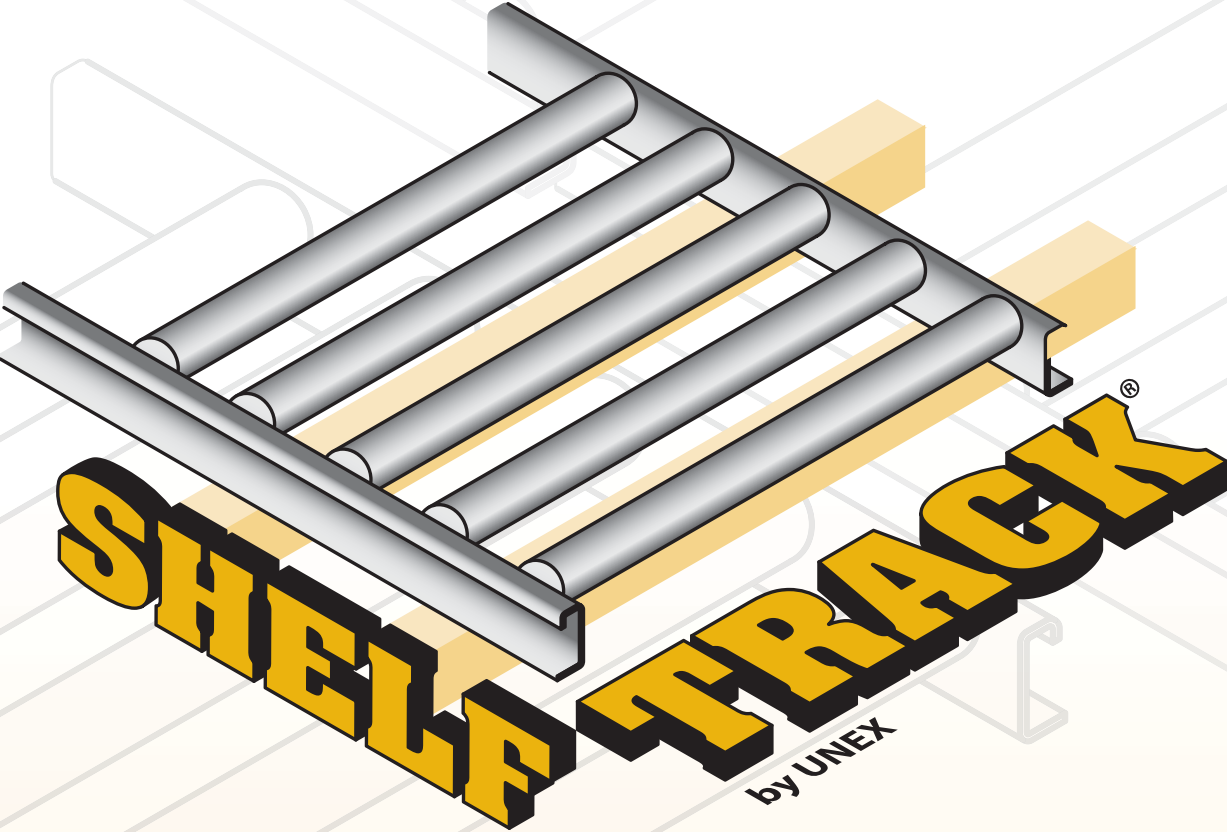
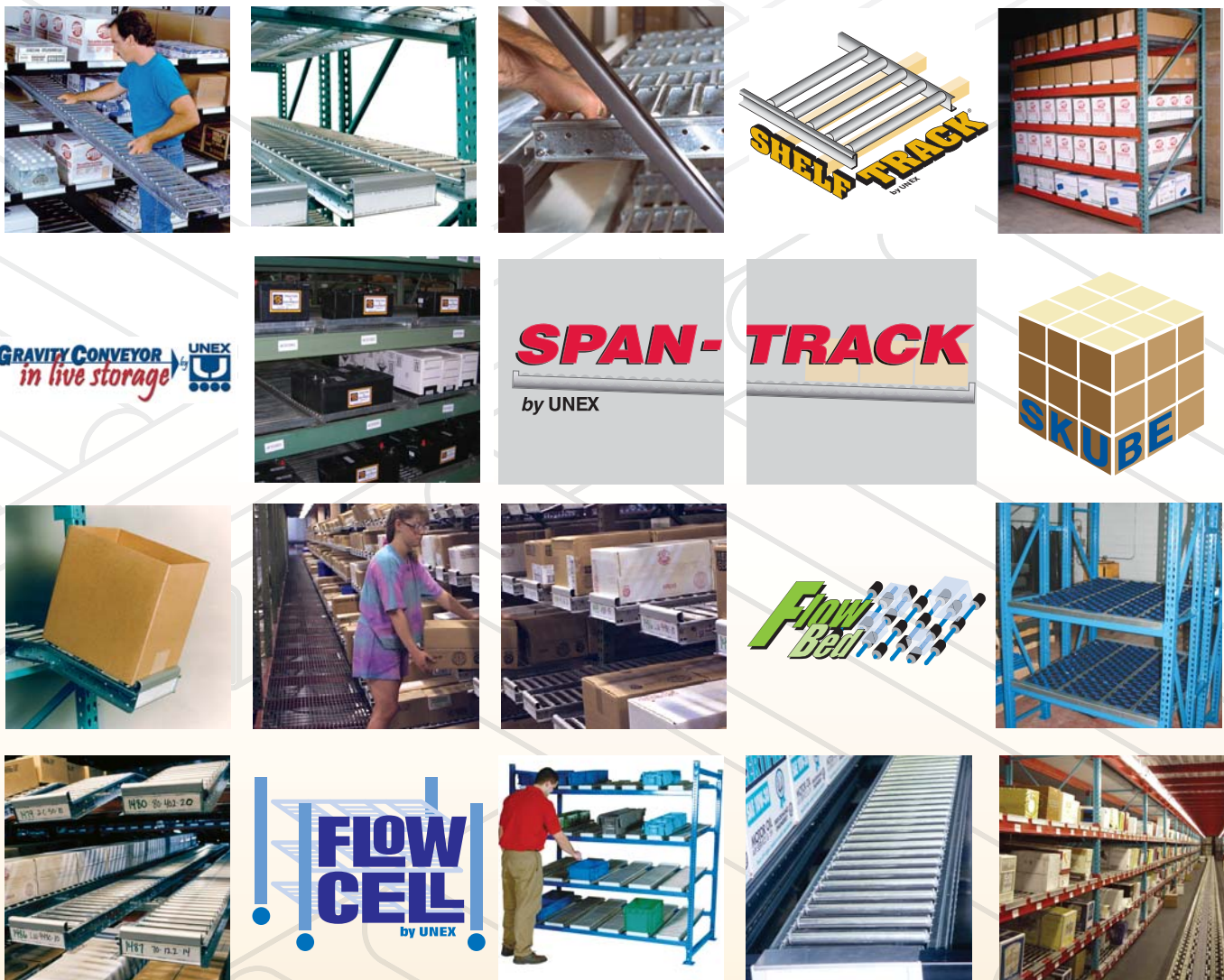


# Carton Flow Track That Replaces Plastic Wheel Lanes



**Replace Your Plastic Wheels For The Last Time!**

### The Unex Advantage Innovation

- 40+ years developing products and solutions
- Over 25 patents granted

### Focus

- Gravity throughput solutions for order selection and assembly operations

### Quality

- Unex manufactured products backed by our Seven Year Platinum Warranty



**Unex Manufacturing, Inc.**  
50 Progress Place, Jackson, NJ 08527  
732-928-2800 • 1-800-695-SPAN (7726)  
FAX: 732-928-2828 Email: span@unex.com  
[www.unex.com](http://www.unex.com)

**The Carton Flow Authority**



NOTE: SHELFTRACK BY UNEX, SPAN-TRACK BY UNEX, SPAN-TRACK BY UNEX, FLOW CELL, FLOW CELL BY UNEX, SKUBE, SKUBE BY UNEX, GRAVITY CONVEYOR BY UNEX, FLOW BED, UNEX, UNEX LOGO, THE CARTON FLOW AUTHORITY, ETC. ARE TRADEMARKS, SERVICE MARKS AND/OR REGISTERED TRADEMARKS OF UNEX MANUFACTURING, INC.  
Note: This product is designed for indoor use only. Do not expose components to water or cleaning solutions. Do not store this product outside.  
The products in this brochure may be covered by one or more of the following Unex Manufacturing, Inc. United States Patents: US 4,108,304; US 4,721,203; US 5,474,412; US 5,951,228; US Des. 423,748; US 6,102,185; US 6,132,158; US 6,510,935 B1; US Des. 482,075; US Des. 482,404; US Des. 482,405; US Des. 482,406; US Des. 482,732; US Des. 482,733; US Des. 482,734; US Des. 484,545; US RE38,517 E

**The Carton Flow Authority**



# ShelfTRACK by Unex

Upgrade Carton Flow by replacing plastic wheel lanes in existing rack and shelves.

**NO** Product Relabeling. **NO** Reconfiguring SKU's. **NO** Changes to Pick-to-light. **NO** more jam-ups!

- Full Width Rollers for Unrivalled Flow
- Steel Frame and Axles
- No Maintenance or Replacement Costs
- 7-Year Warranty

## SPECIFICATIONS

### TRACK LENGTHS

- Available in "to-the-inch" cut lengths from 3 ft. to 12 ft.

**TRACK WIDTHS - 6", 9", 12", 15"    ROLLER CENTERS - 1", 2", 3"**

### ROLLER FEATURES

- Full width, 3/4" diameter, aluminum, steel axle

### LOAD CAPACITY

Maximum capacity of ShelfTRACK sections is 50 lbs per ft. Overall capacity is determined by specifications of the existing support shelf. Check with shelf manufacturer for handling capacities.

## SELECTION GUIDE

### TRACK LENGTH

To determine track length required, measure the length of the plastic wheel lanes to be replaced, or measure the clear distance between the inside of shelf's back angle and the inside of the front angle.

### ROLLER CENTERS

Cartons with firm flat bottoms flow well when supported by four rollers. Cartons with poor bottoms or heavier weights may require closer roller spacing.

### PITCH

- Recommended pitch is 1" per ft. Test for product flow

### TRACK WIDTH

- Cartons with firm flat bottoms can be wider than track section

### GUIDE RAILS

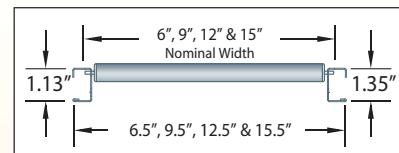
- Guide Rails are not required with ShelfTRACK, but can be left in place at end-user's discretion

## INSTALLATION

### TO RETROFIT EXISTING FLOW SHELVES:

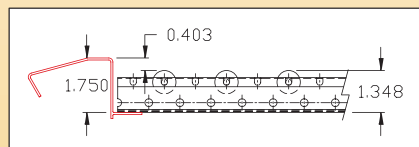
1. Remove existing plastic wheel tracks.
2. If existing guides are to remain in place, set ShelfTRACK sections into place between guides.
3. If guides are not being used, remove them and set ShelfTRACK onto shelves, evenly spacing the track sections across the shelf. Track can be placed on or between the shelf's "teeth-like" retainers. If shelf has no "toothed" retainers, simply place the track on the shelf between front and back angles.
4. The height of the front stop on the existing shelf must be greater than 1-3/4". The ShelfTRACK top of roller elevation is 1-3/8". UNEX recommends using a package stop for applications where the existing front stop is less than 1-3/4".
5. The spacing of the intermediate supports of the existing shelving must be 24" on center of less in order to maintain capacity.

\*For Kingway shelf frames shelf adaptor required.



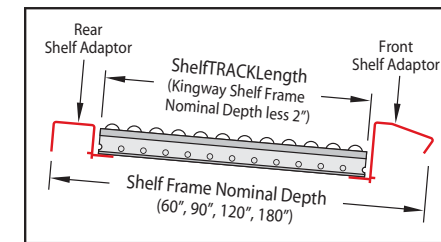
CARTON LENGTH	
Minimum Carton Length	Maximum Roller Centers
4"	1"
8"	2"
12"	3"

CARTON WIDTH	
Deck Span-Track Width	Maximum Carton Width
6"	8"
9"	13-1/2"
12"	18"
15"	22-1/2"



# Engineered Solutions for ShelfTRACK Applications

## SHELF ADAPTOR

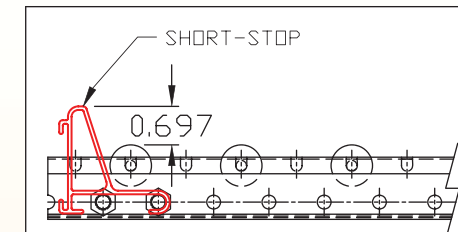


KINGWAY SHELF FRAME NOMINAL DEPTH	ShelfTRACK ACTUAL TRACK LENGTH
60"	58"
90"	88"
120"	118"
180"	178" total*

\*Two sections spliced

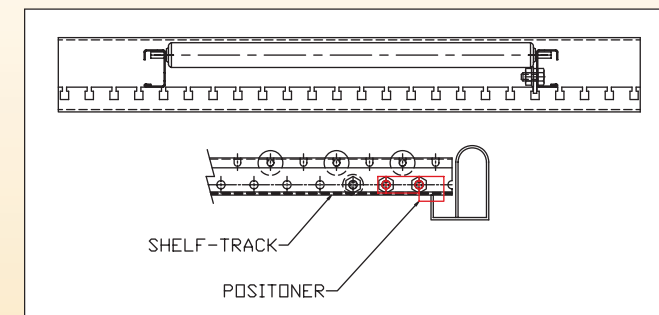
Shelf Adaptor provides a ledge on the front and rear of the shelving unit, for an easy "drop-in" installation. When using the shelf adaptor, the ShelfTRACK length should be 2" less than the shelf frame nominal depth.

## SHORT STOP



The ShelfTRACK Short Stop is an aluminum extrusion that provides a package stop in the front or rear of the track.

## SHELFTRACK POSITIONER



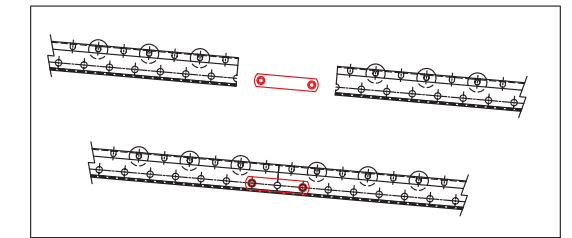
The ShelfTRACK Positioner prevents lateral track movement within the shelf. The positioner's (2) are bolted on one side of the track in the front and rear. It is recommended that the positioner's be mounted on the same side of the side-channel. \*The positioner's can be factory installed at the time of purchase or can be installed in the field.



### Unex SEVEN YEAR PLATINUM WARRANTY

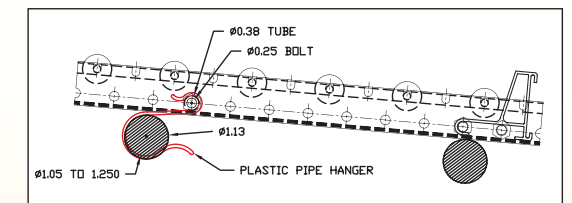
Unex "Platinum Products" are warranted to be FREE of defects in material and workmanship for a period of seven years from the date of shipment. Warranty requires the equipment be applied within the published guidelines.

## SHELFTRACK SPLICING



Required for sections greater than 144". The splice kit connects (2) ShelfTRACK sections. The splice must fall on an intermediate support.

## PIPE HANGER



The ShelfTRACK Pipe Hanger attaches ShelfTRACK to creform and other tubing structures.

