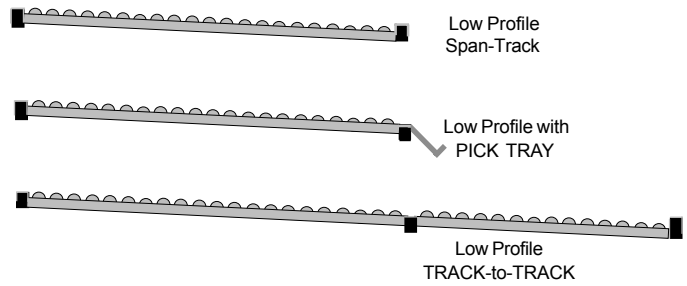


Span-Track, manufactured by Unex, is available in three models: High Profile, Low Profile and Flow Deck. This guide is for the Low Profile model (98S2). It shows how to install low profile sections of Span-Track into pallet rack (this side of page). Pick tray and "Track-to-Track" installation instructions are on the reverse side.

High profile and flow deck installation instructions are available separately.



INSTALLATION SPAN-TRACK

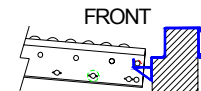
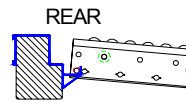
Low Profile

Straight sections of Low Profile Span-Track install **between** pallet rack beams. Install the first level of track following the two steps listed below, test for pitch, then repeat.

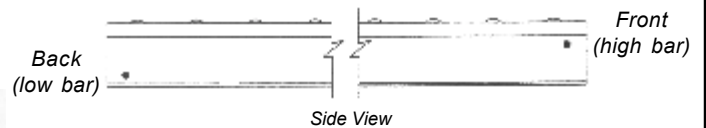
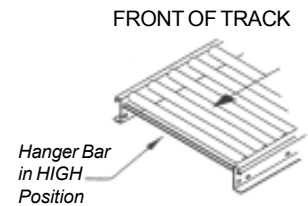
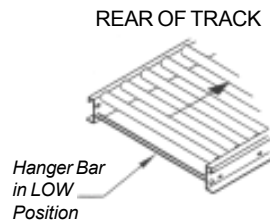
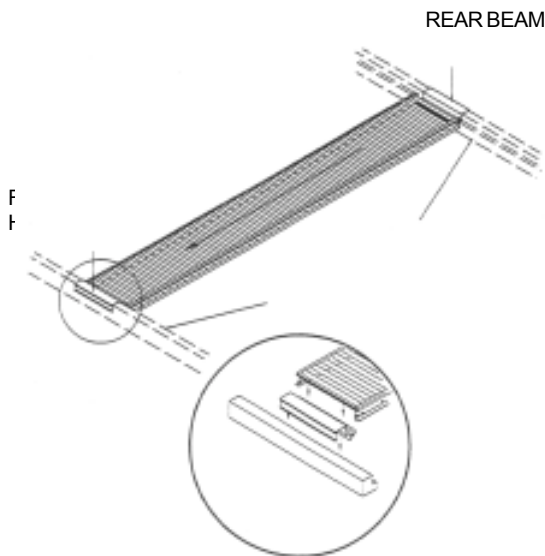
- 1 SET BEAMS**
Set front pallet rack beam to desired discharge elevation. Set rear beam at higher elevation for flow. (see chart)

PRODUCT	PITCH PER FOOT
Totes	3/4" to 7/8"
1-10 Lb. cartons	7/8" to 1-1/8"
10-30 Lb. cartons	7/8" to 1"
30-60 Lb. cartons	3/4" to 7/8"

- 2 ADD HANGERS & TRACK**
Place one set of hangers on front & rear beams - do not force or hammer hangers onto beams. Add track in position onto hangers. Test pitch.



Front of track should be below beam to act as stop



END CAPS - included, (2) per hanger, attach to side of hanger.

PRODUCT IDENTIFICATION LABELS included, (1) per hanger, slide into the label holder front of the hangers.



